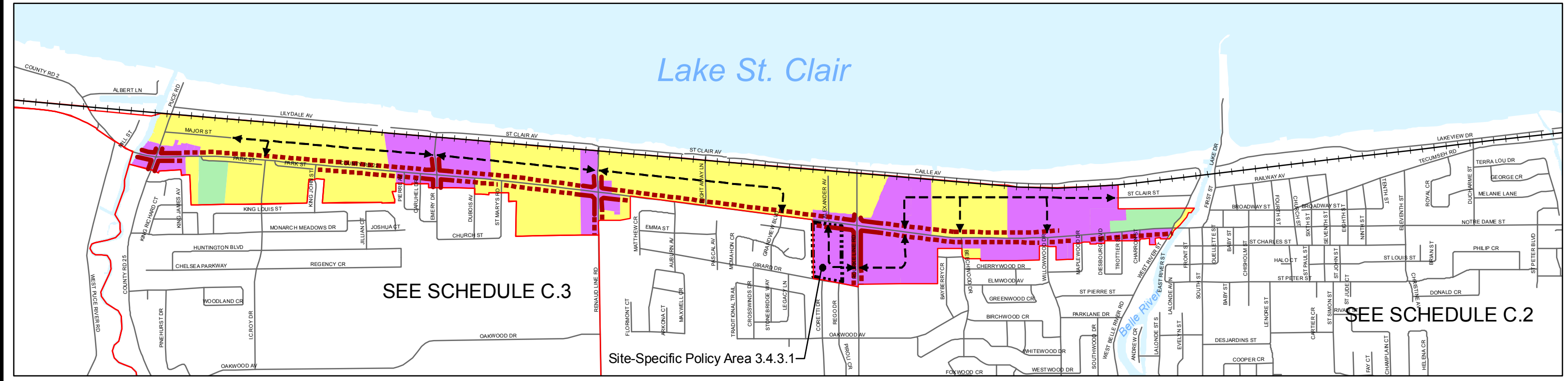
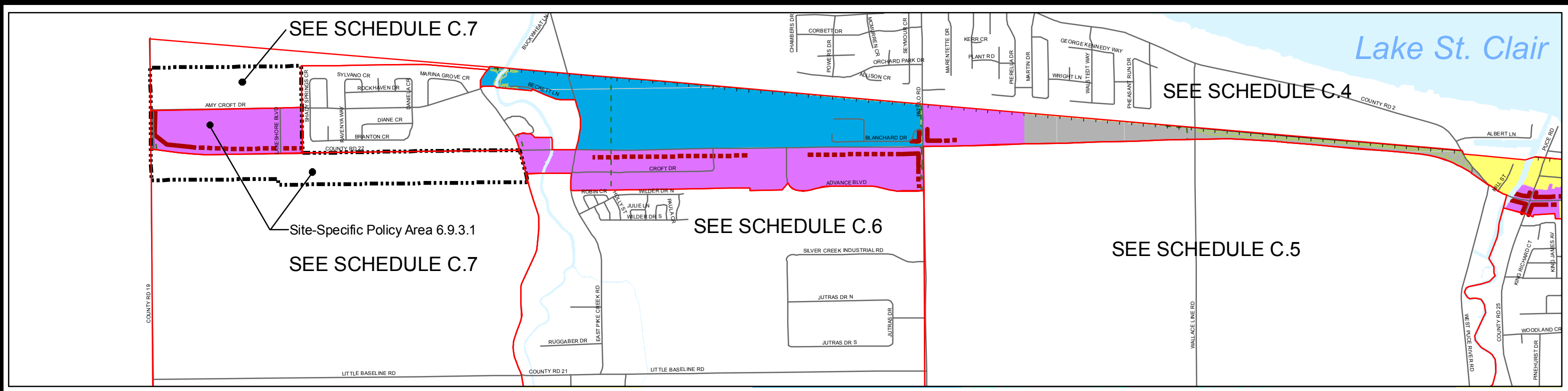


M:\Jobs\2009\14_09208.001_P01 - Town of Lakeshore\Maping\GIS\mxd\2012 01\Schedule C11 - Land Use - County Road 22 Special Planning Area (New MU).mxd

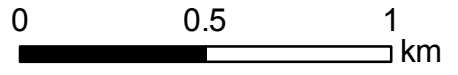


LAND USE DESIGNATION (SECTION 6.0)

- | | | | |
|--|-------------------------------------|--|----------------------------------|
| | Agricultural Designation | | Mixed Use Designation |
| | Hamlet Designation | | Central Area Designation |
| | Waterfront Residential Designation | | Employment Designation |
| | Urban Fringe Designation | | Major Institutional Designation |
| | Residential Designation | | Natural Conservation Designation |
| | Service Commercial Designation | | Parks and Open Space Designation |
| | Recreational Commercial Designation | | Urban Reserve Designation |

LEGEND

- | | | | |
|--|----------------------------|--|---|
| | Urban Area Boundary | | Lake St. Clair Floodprone Areas/ Inland Floodplain Development Control Area |
| | Hamlet Area Boundary | | Limit of the Regulated Area |
| | Waterfront Area Boundary | | Woodlands |
| | Urban Fringe Area Boundary | | Candidate Provincially Significant Wetlands |
| | Town Boundary | | Continuous Street Frontage |
| | Site-Specific Policy Area | | Intermittent Street Frontage |
| | Special Planning Area | | Potential Road Connection |



Interpretation Note: This Schedule will be read and interpreted in conjunction with the Official Plan in its entirety. Land Use Designations on this Schedule must be interpreted in conjunction with Schedule B.2 (Natural Heritage Features).

Town of Lakeshore OFFICIAL PLAN



SCHEDULE "C.11" LAND USE (COUNTY ROAD 22 SPECIAL PLANNING AREA)



Revision Date: January 10, 2012